

SlickEdit® 2011

All editors are not created equal. At SlickEdit, our belief is that it's the code that really matters. SlickEdit is designed for power programmers by power programmers. We take great pride in delivering unparalleled power, speed, and flexibility to our customers. Our goal is to remove the tedious tasks involved with programming, allowing you to focus on the reason you first got into programming: the thrill of writing great code.

SPEED

Use SlickEdit to write more code in less time. Spend less time waiting for results.

- Type fewer characters and make fewer errors using syntax expansion, completions, aliases, and code templates.
- You can launch SlickEdit, edit a file, and exit in less time than it takes other IDEs to finish loading.
- Context Tagging® builds a database of your symbols, allowing you to quickly navigate from a symbol to its definition or references without searching.
- Use commands and key bindings to keep your hands on the keyboard for maximum productivity.

POWER

SlickEdit provides the power to work with your real-world projects.

- Create and manage large workspaces and projects.
- Edit files up to 2 GB in size.
- Utilities for diffing files, testing regular expressions, doing builds, and interacting with version control.
- Extend SlickEdit's capabilities using the Slick-C® macro language.

FLEXIBILITY

All programmers are different. SlickEdit lets you work the way you want.

- Configure SlickEdit to match your coding style.
- Choose from 14 editor emulations.
- Code in over 40 languages on 9 platforms.
- Customize menus, toolbars, key bindings, and mouse operations.

Cool Features

Code Navigation

Use Ctrl+Dot to jump from a symbol to its definition. Use Ctrl+/ to list all of the references for the current symbol and optionally jump to the first reference.

Preview Tool Window

Displays the definition of the current symbol in the editor window, allowing you to see the definition without having to open a separate buffer.

References Tool Window

Displays the list of references for a symbol. Use a single keystroke to open the References view for the current symbol, or you can type or select a symbol in the Symbol drop-down list.

Syntax Expansion

Expands common block structures (*if, for, try, etc.*) when the initial keyword is typed.

Auto-Completions

Reduce keystrokes by automatically completing symbols as you type.

DIFFzilla®

Provides editable dynamic differencing and merging for files, directories, and source trees.

Comment Wrapping

Automatically wraps comments to the next line as you type.

Smart Line Selections

Line selections for single or multiple lines are pasted above or below the current line of code.

SmartPaste®

Line selections are automatically formatted when pasted.

Code Quick | Think Slick®

slickedit®

SlickEdit® 2011

New Features

64-bit Versions for Windows and Linux

Native 64-bit versions of SlickEdit are now available for Windows and Linux.

Multithreading

Parts of SlickEdit have been reengineered to be multithreaded, making better use of available CPU resources and reducing the waiting time for affected operations.

Support for Ruby Debugging

Support is now available for debugging Ruby programs.

Support for the Git Version Control System

Git version control system support is now available with a basic status tree showing the result of comparing the workspace to the repository.

Auto-Reload Performed on a Thread

Auto-reload now uses a thread to access files to prevent SlickEdit from hanging due to unavailable resources.

Dynamic Debugger Enhancements

SlickEdit has been improved with added support for Python 3, corrected display of Python special values, the capability to change values while debugging, displayed value type, and improved display of Perl values.

Improved Microsoft Visual Studio 2010 Support

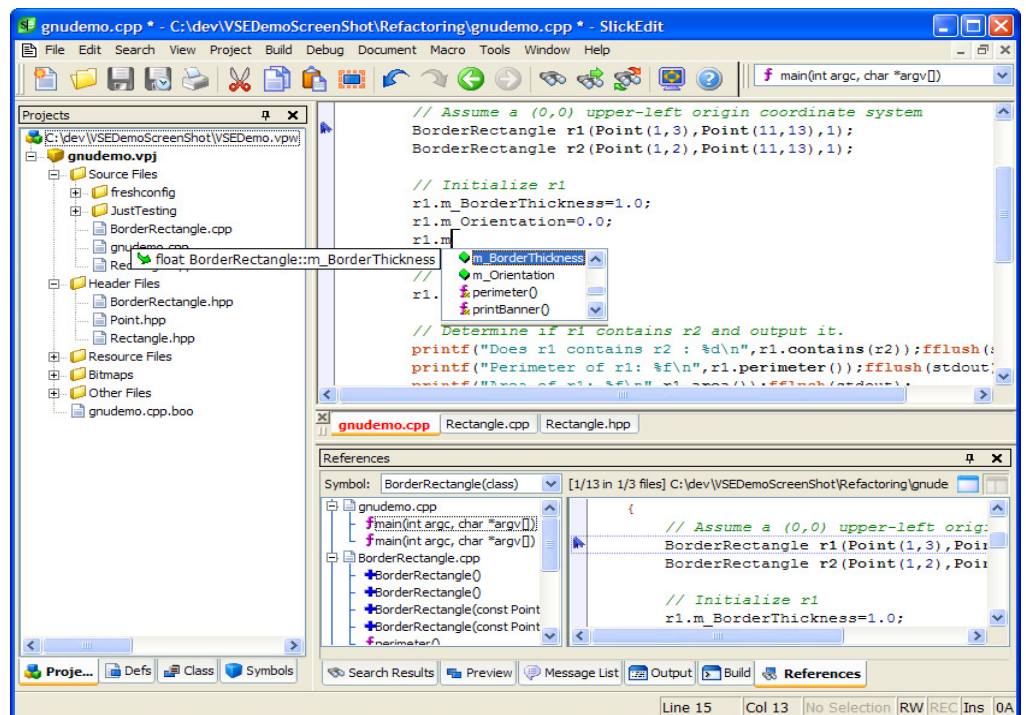
Workspace and project folder handling have been improved, along with support for project dependencies. The ability to read project property sheets is now available.

Updated JUnit Support

JUnit support is now available for versions 4.6 and later.

Community

The SlickEdit Community is a place for professional developers to exchange ideas, experiences, opinions, and best practices. SlickEdit facilitates these discussions through the use of community forums and a developer blog devoted to topics relevant to power programmers. Members interact directly with SlickEdit users and developers, discussing SlickEdit products and promoting the respectful exchanges of ideas throughout the developer community.



As you type, **Auto-Complete** offers completion suggestions for syntax, keywords, symbols, and lines of code. Press **Ctrl+/ **(Search > Go to Reference), and the **References** tool window, docked at the bottom, automatically updates to show a list of symbol references (uses).****

Platforms Supported

- Microsoft Windows 7, Windows Vista, Windows XP, Windows Server 2008: 32-bit and 64-bit
- Linux®, 32-bit and 64-bit, kernel 2.6 or later, and LSB compliant (64-bit requires glibc 2.5 or later)
- Mac OS® X 10.4 and later (X11 required)
- AIX 5.3 and later
- HP-UX® 11 and later
- Solaris™ SPARC® 7 and later
- Solaris x86 10 and later

Languages Supported

SlickEdit supports over 40 languages, including C/C++, Java™, JavaScript™, HTML, XML, SQL, Perl, PHP, Python™, C#, COBOL, Fortran, Ruby, and Visual Basic®. For a complete list of languages supported visit www.slickedit.com/languages.

About SlickEdit Inc.

SlickEdit Inc. provides software developers with multi-language development tools and the most advanced code editors available. Power programmers, from Fortune 500 companies to individuals, have chosen SlickEdit as their development tool of choice for over 20 years. Proven on Windows, Linux, UNIX, and Mac OS X platforms, SlickEdit products enable even the most accomplished developers to write more code faster and more accurately. For more information about SlickEdit and free trial downloads, please visit www.slickedit.com.

SlickEdit, Visual SlickEdit, Clipboard Inheritance, DIFFzilla, SmartPaste, Context Tagging, Slick-C, and Code Quick | Think Slick are registered trademarks of SlickEdit Inc. All other products or company names are used for identification purposes only and may be trademarks of their respective owners. Protected by U.S. Patent 5,710,926.

SlickEdit Inc.
3000 Aerial Center Parkway
Suite 120
Morrisville, NC 27560
1.919.473.0070
1.800.934.EDIT (USA)
1.919.473.0080 fax
info@slickedit.com
www.slickedit.com