

Top Features Quick Guide

Features Covered:

- Symbol Analysis and Navigation
- Backup History
- Editable Dynamic Differencing
- Recordable and Programmable Macros

Symbol Analysis and Navigation


This feature helps you quickly locate symbols, view definitions, and view lists of references. It allows you to navigate your code in the way that you think about it rather than in the way that it is stored.

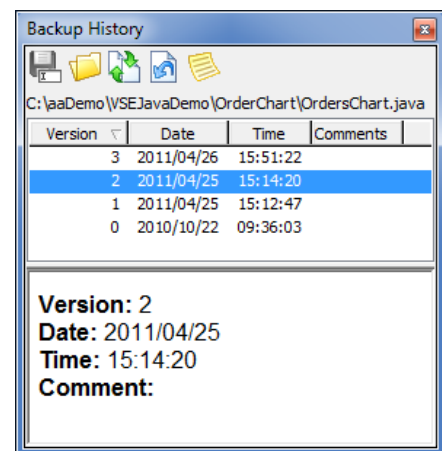
To use, create a project using the Project Type that matches your source code by selecting **Project > New**. Next, add your files to the project by selecting **Project > Project Properties**, then choose the Files tab. Last, tag your libraries using **Tools > Tag Files** and then click the Auto Tag button.

Now you can jump from a symbol to its definition using Ctrl+Dot (using CUA emulation). You can view a list of references and jump to the first one using Ctrl+/. After either of those operations, you can jump back to the starting location using Ctrl+Comma.

Backup History

Backup History keeps a version of each file every time you save, allowing you to fall back to a previous version to compare the current version against a previous version. This feature is a safety net that bridges the gaps between versions in Version Control.

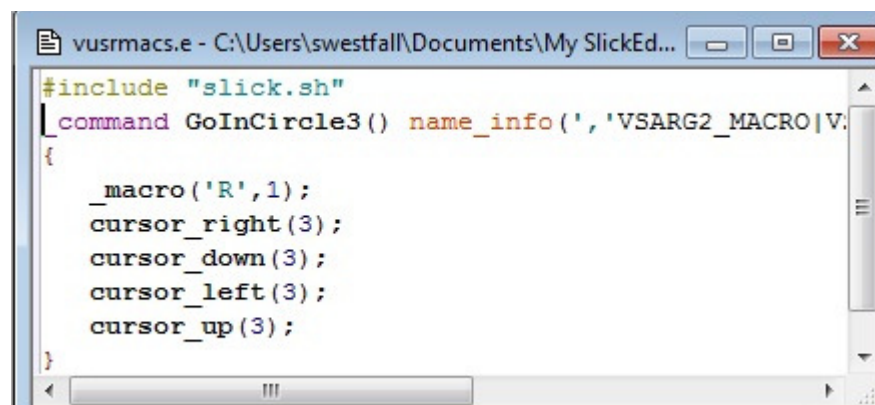
To view Backup History, select **View > Tool Windows** and then select Backup History or click the Backup History icon. 



Recordable and Programmable Macros

With Recordable and Programmable Macros you can automate frequently performed tasks. Recorded Macros are stored in the language used for Programmable Macros.

To record a macro, select **Macro > Record Macro**. Then perform a series of operations. When finished, select **Macro > Stop Recording Macro**. You can then save the macro or edit it.

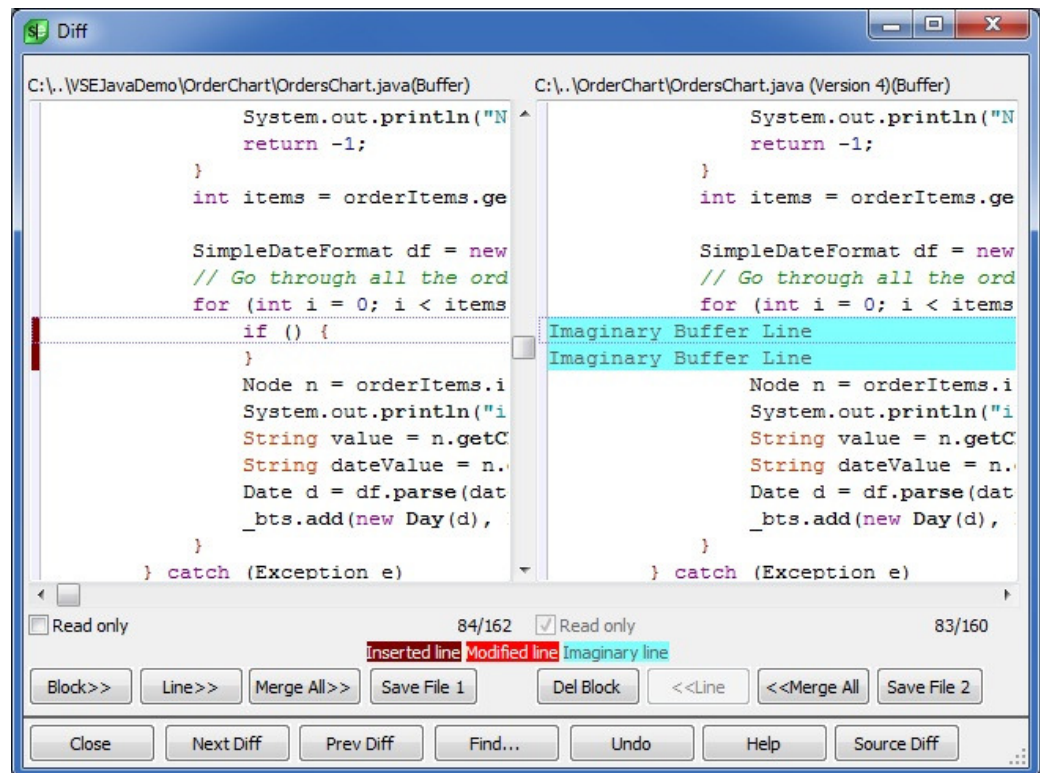


Editable Dynamic Differencing

The Editable Dynamic Differencing engine, DIFFzilla, allows you to compare two files and edit while viewing the differences.

To run DIFFzilla, select **Tools > File Difference** from the main menu. You can also launch DIFFzilla from Backup History to compare two versions of the same file.

You can use Source Diff to compare files while ignoring whitespace and line breaks. If you have two files that differ just by brace style — where one has an open brace on the same line as an *if* and the other puts it on the next line — Source Diff ignores this difference and shows only the meaningful differences in the code.



Dynamic Surround

This feature allows you to expand a block statement and pull in lines of code below the block.

It is triggered by Syntax Expansion when you type a block statement keyword — such as *if*, *while*, etc. — followed by a space.

